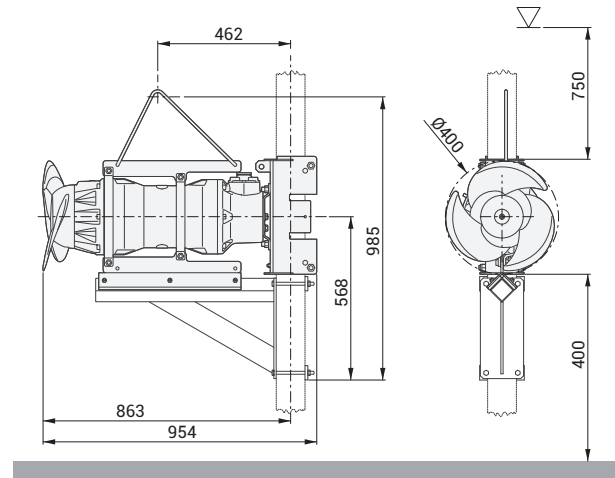




## ZMD 040D A 4.5/8 AH 010



130 Kg (stand and guiding system excluded)

### Product

Type	MIXER
Name	ZMD 040D A 4.5/8 AH 010
Configured Standard	-
ATEX marking	CE Optional (from DECEMBER 2019)

### Motor

Rated Voltage	400 V
Frequency	50 Hz
Motor phases	3
Number of poles	8
Incoming power P2	4.5kW
Electric power P1	kW
Rated current	A
rpm	rpm
Efficiency	%
Cos φ	
Rated torque	Nm
Start	DOL
Starting current	A
Starting torque	Nm
Degree of protection	IP 68
Insulation class	H
Motor efficiency class ref.	IE3

### Gear unit

Type	-
Gear ratio	1

### Propeller

Name	040D
Rated diameter	400 mm
Number of blades	3
rpm	714 rpm
Pp2	4.0 kW
Propeller thrust	1060 N
Jet ring	Optional

### Cable

Type	4G2.5 + 3x1
Length	10 m

### Monitoring

Thermal protector	klixon
Leakage sensor	1 in mechanical seals chamber

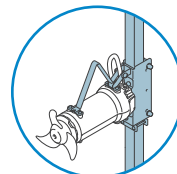
### Operating limits

Ambient temperature	0 ÷ 60°C
Max. density treated liquid	1100 Kg/m <sup>3</sup>
pH treated liquid	6-14
Max. start per hour	20 /h (equally distributed)
Max. acoustic pressure level	Max 70 dB (A)
Operating mode	S1 – Continuous use

### Construction materials

Case	Cast iron EN-GJL-250
Gear box	-
Propeller	AISI 316 (optional AISI 329)
Jet ring	-
Shaft	AISI 431
Mechanical seal (motor side)	Silicon carbide
Mechanical seal (propeller side)	Silicon carbide
Painting	Bi-epoxy 200 µm (optional 400 µm)
Screws	Stainless steel A2-70 (optional A4)
Gaskets	NBR
Fixing system	AISI 304 stainless steel (optional AISI 316)

### Installation



#### STANDARD

	standard 100 x 100
	optional 50 x 50
	60 x 60
	80 x 80